

2008



Base station code: **3079**

**Dowry park**

**12 Mt. Crescent avenue  
Wellington  
6451**



# Site Management Report

In terms of

## EMF Exposure

Compliance report  
Issue No: 1  
Date: 20/10/2009



## Compliance report Document Revision History

Issue No	Issue Date	Reason for Amendment
1	20/10/2009	Original

## Glossary of Terms and Abbreviations

Term	
EMF	Electromagnetic Fields
Exclusion Zone	Area around an antenna or antennas where the RF field values emanating from the antennas exceed the ICNIRP public guidelines (public exclusion zone) or the ICNIRP occupational guidelines (occupational exclusion zone)
ICNIRP	International Commission on Non-Ionizing Radiation Protection
RF	Radio-Frequency

## Table of Contents

Intended Use of Site Report .....	1
Site Contact Details .....	2
Site Information Contacts .....	2
Exclusion Zone Indicators .....	3
Signage and Access Control.....	12
Access Control at Site.....	12
RF Signage Installed.....	12
Special Access Requirements.....	12
Equipment Installed at this base station.....	13
Antenna Comments .....	13

## **Intended Use of Site Report**

This report is created to assist RF trained personnel in ensuring a safe working environment, with respect to electromagnetic radiation, when working in the vicinity of RF sources. Personnel must at all times follow the company's safety procedures.




Details of access control and signage at the site is given in this report. The numerically computed compliance zones are also shown. All this information, including top and side views, can be used to determine safe working positions around the RF sources.

**Contact the Base station RF Assessor to ensure that this document is still the current version of the report for this site.**

## Site Contact Details

This Section shows the contact details for all individuals or organisations with which this site is associated. **Permission to access this site must be obtained from the relevant party.**

## Site Information Contacts

Site Owner			
The site owner is the individual or organisation that is responsible for the stated building(s) or structure(s) at this base station. Contact the Site Owner for building or site renovations and general maintenance issues.			
	Linked Head Office building 103 Viceroy road Cape Town	<b>Phone</b>	+27 56 829 3355
		<b>Mobile</b>	+27 56 829 3355
		<b>Email</b>	<a href="mailto:hands@linked.com">hands@linked.com</a>
Site Manager			
The site manager is the individual or organisation that is responsible for managing access and maintenance on the stated building(s) or structure(s) at this base station. Contact the Site Manager for building or site renovations and general maintenance issues and when changes to access arrangements or equipment on the base station have been made.			
	Linked Head Office building 103 Viceroy road Cape Town	<b>Phone</b>	+27 56 829 3355
		<b>Mobile</b>	+27 56 829 3355
		<b>Email</b>	<a href="mailto:hands@linked.com">hands@linked.com</a>
Site RF assessor			
The site RF assessor is the individual or organisation that is responsible for assessing the extent of RF emissions at the site, as well as certifying the base stations compliance with relevant EMF standards. Contact the Site RF Assessor for the latest RF Safety information and when changes to access arrangements or equipment on the base station have been made.			
	EMSS Consulting Pty. Ltd. 32 Techno avenue Stellenbosch	<b>Phone</b>	+27 21 880 1880
		<b>Mobile</b>	+27 84 555 2088
		<b>Email</b>	<a href="mailto:info@emss.co.za">info@emss.co.za</a>

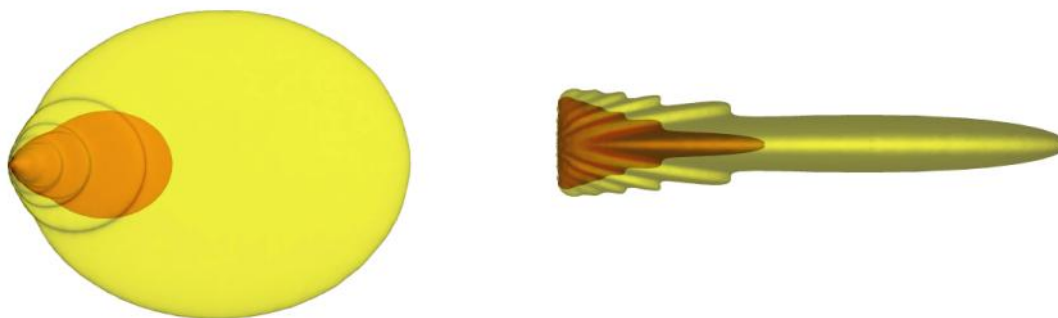
## Exclusion Zone Indicators

This report contains numerically computed exclusion zones. These zones are computed based on the ICNIRP guidelines. The red zone is the occupational exclusion zone. No person is allowed into these areas without following the appropriate shut-down, power-down or safe pass-through procedures. RF trained personnel are allowed into the yellow zone, on condition that they follow the relevant site access procedures. No other person is allowed in the yellow, general public exclusion zone. The area outside the yellow is open to public access.

**The compliance zones shown in this version of the report were generated**

**using:** CAD Tool version: 2.8.26 (internal) (Calculator: 4.8)

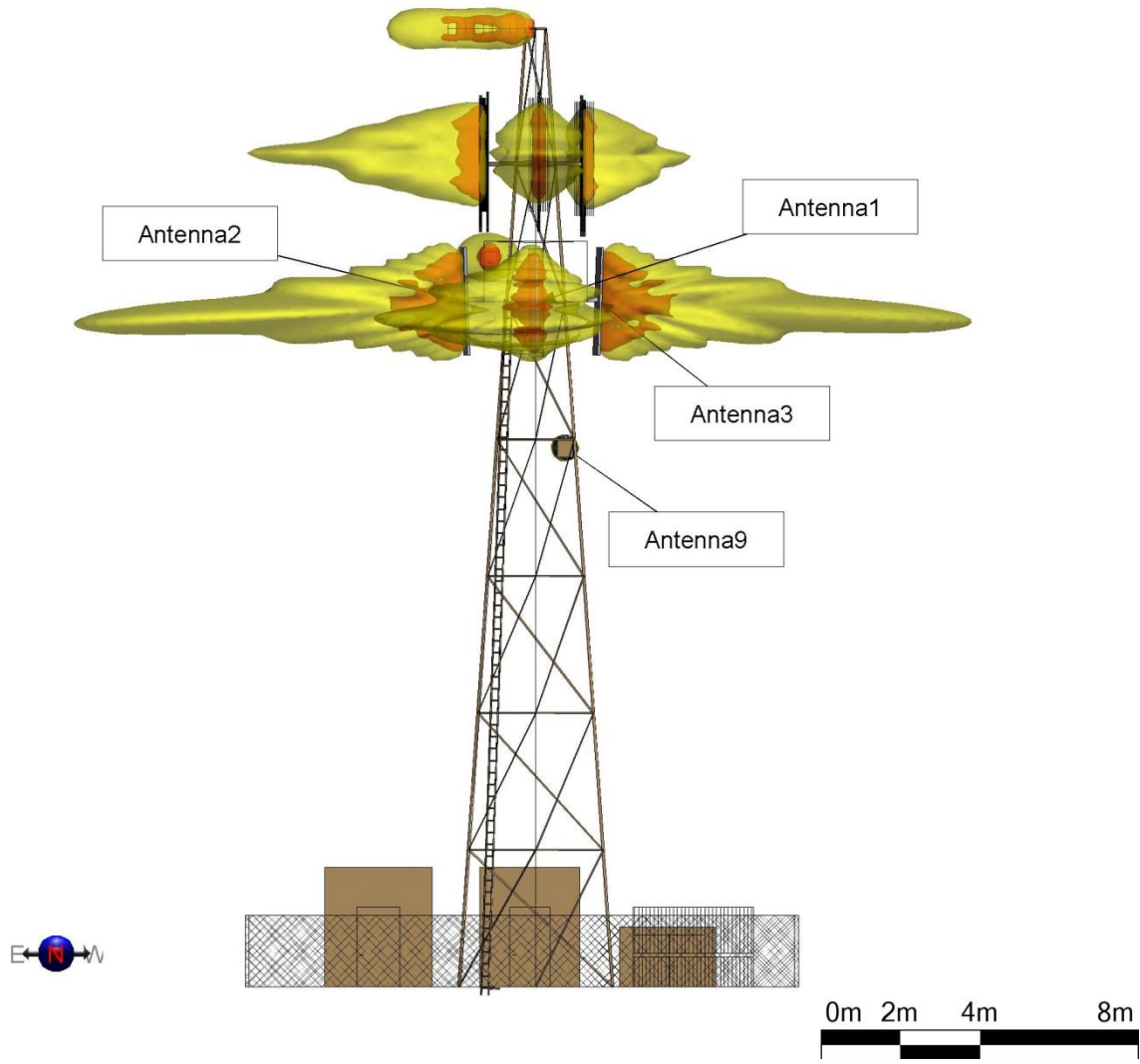
- Red Zone = No access without following appropriate shut-down, power-down or pass through procedures
- Yellow Zone = Access only allowed for RF trained personnel. No access for general staff, maintenance personnel or the public
- White Zone = Free access



**Important :**

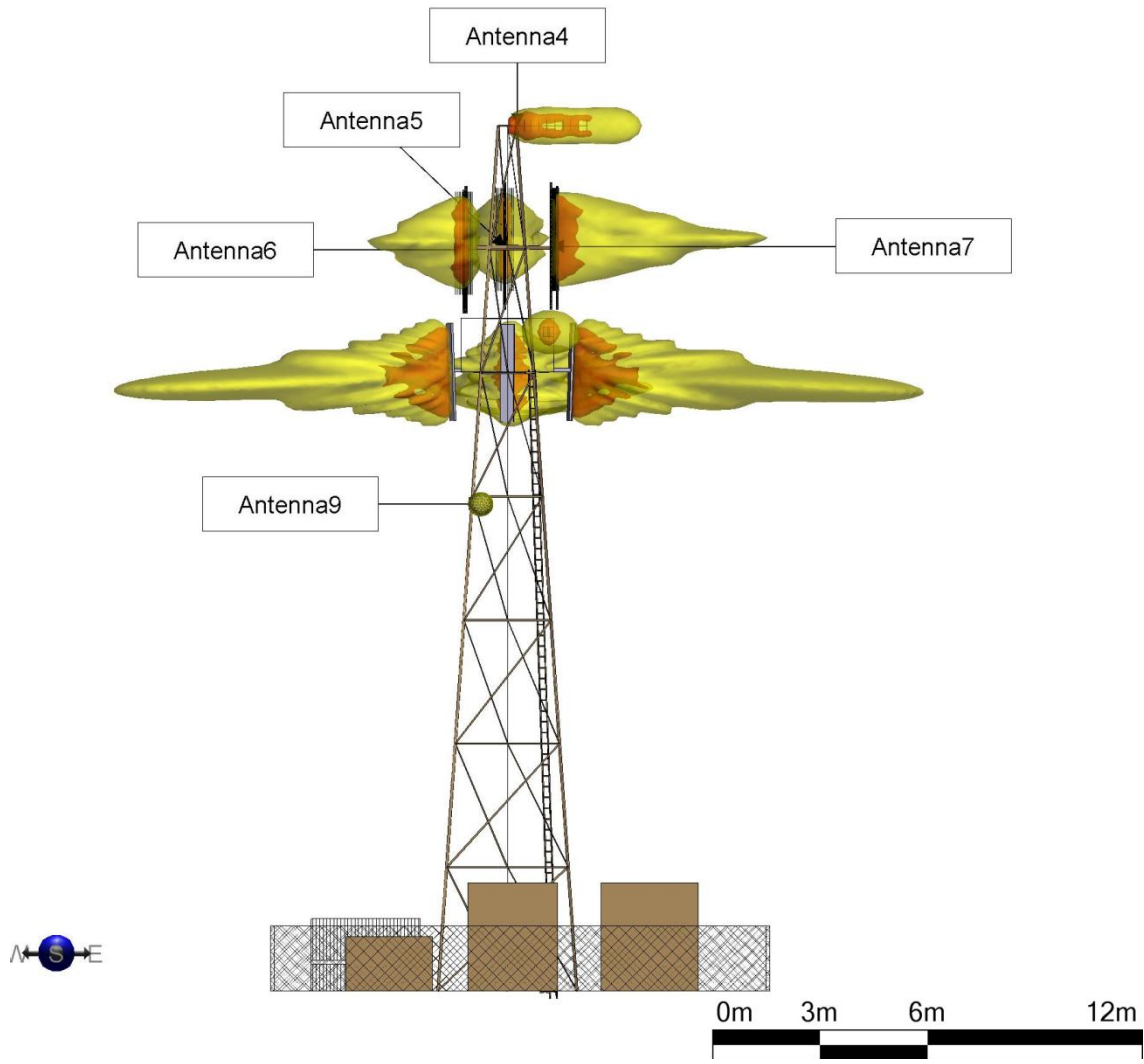
**General Public and Maintenance Personnel and your staff do not enter red or yellow zones.**

Side view



- Public
- Occupational

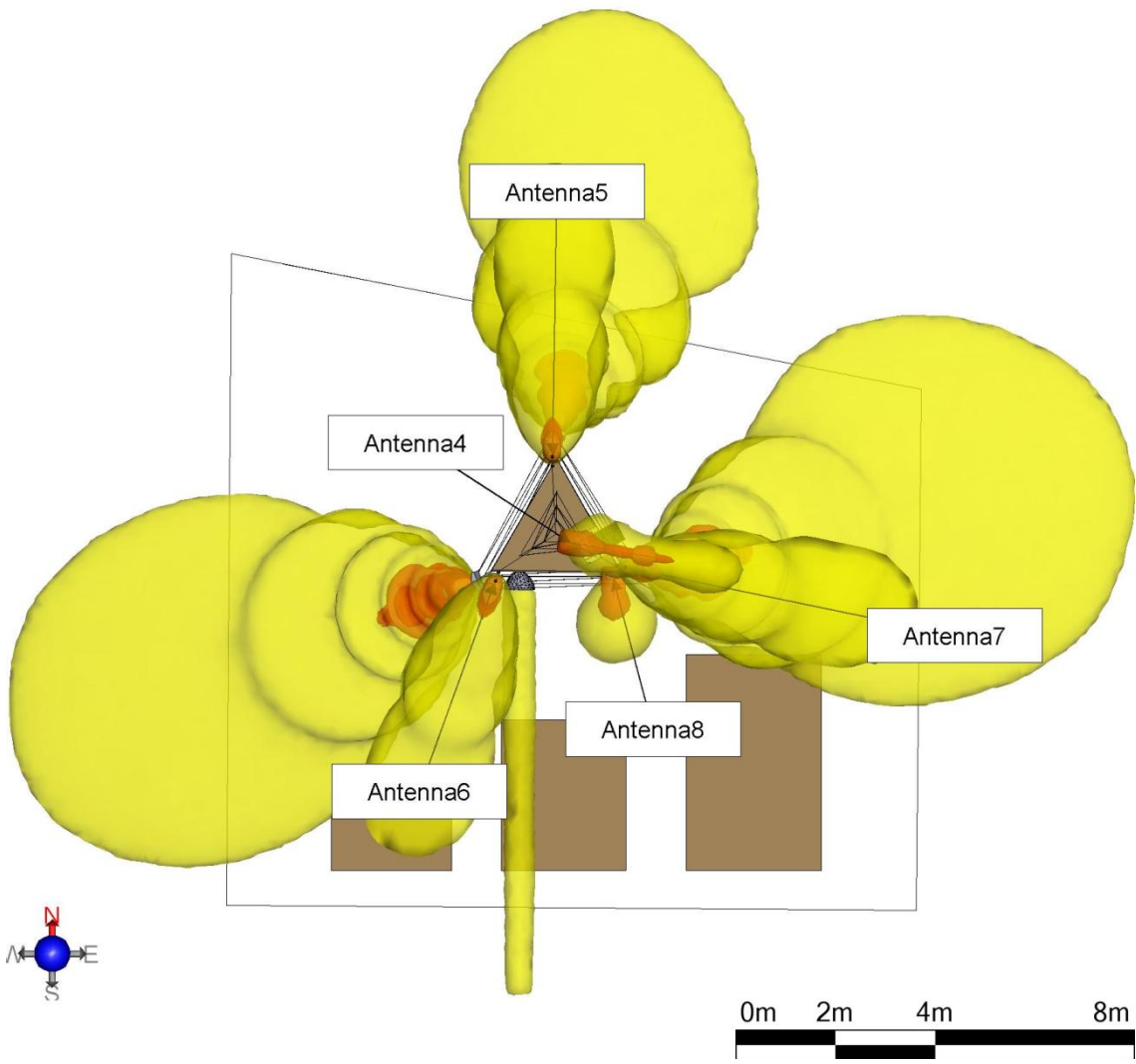
Side view 2



- Public
- Occupational

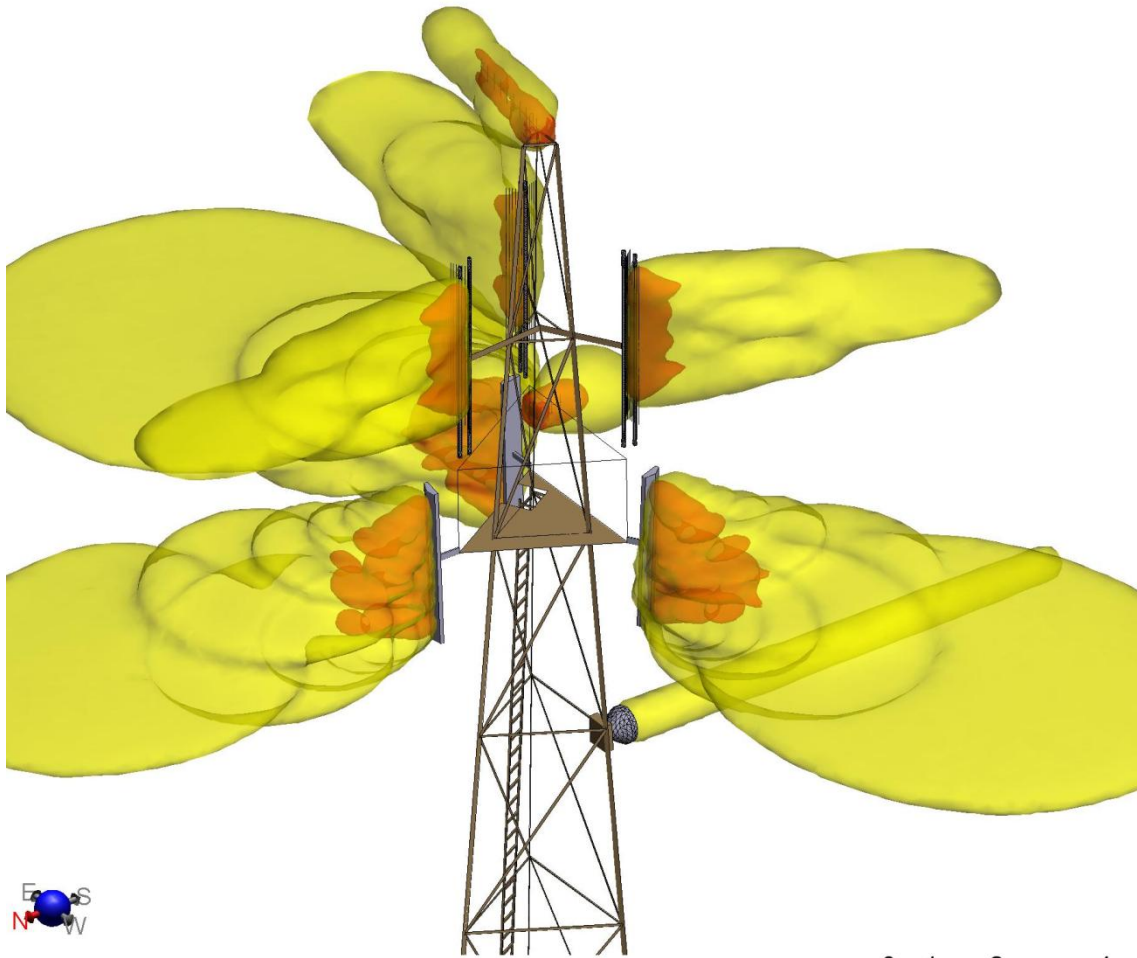


Top view



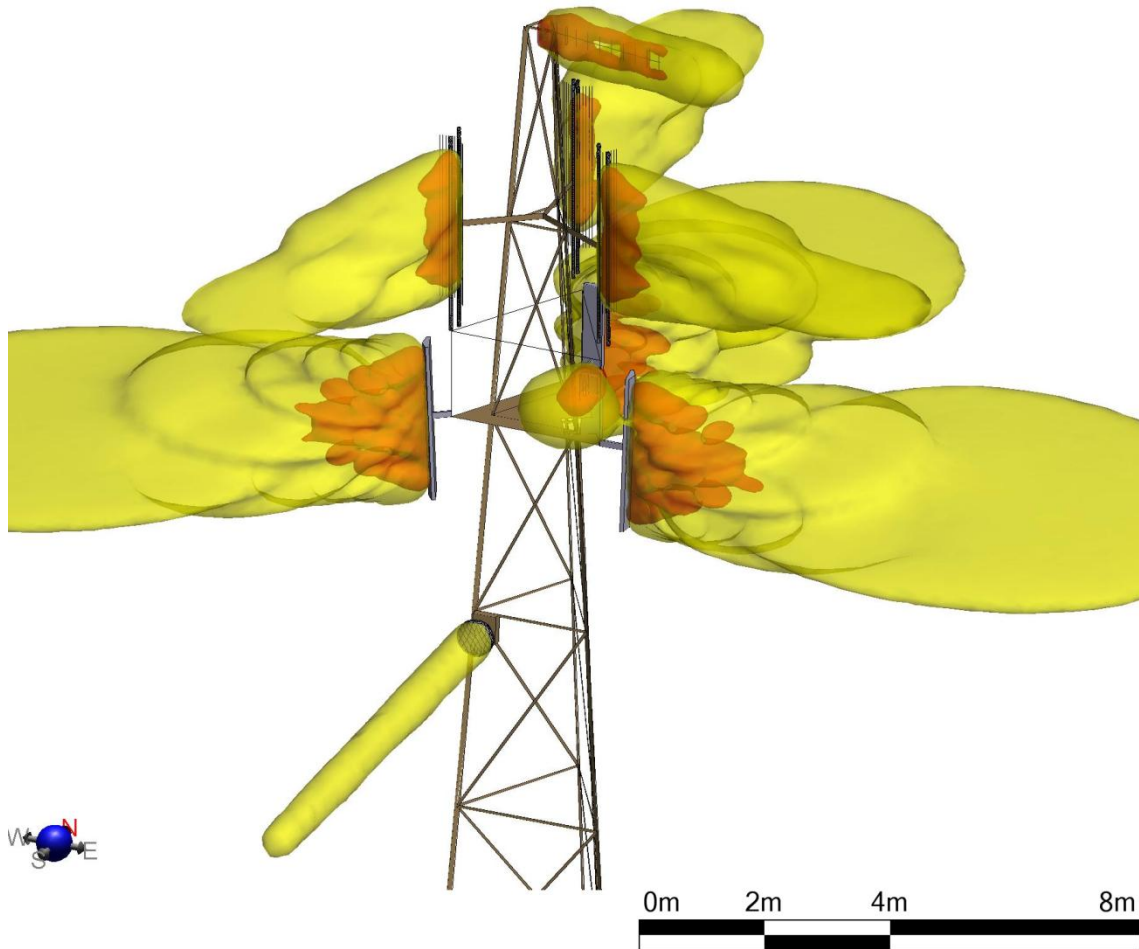
- Public
- Occupational

# View of platform



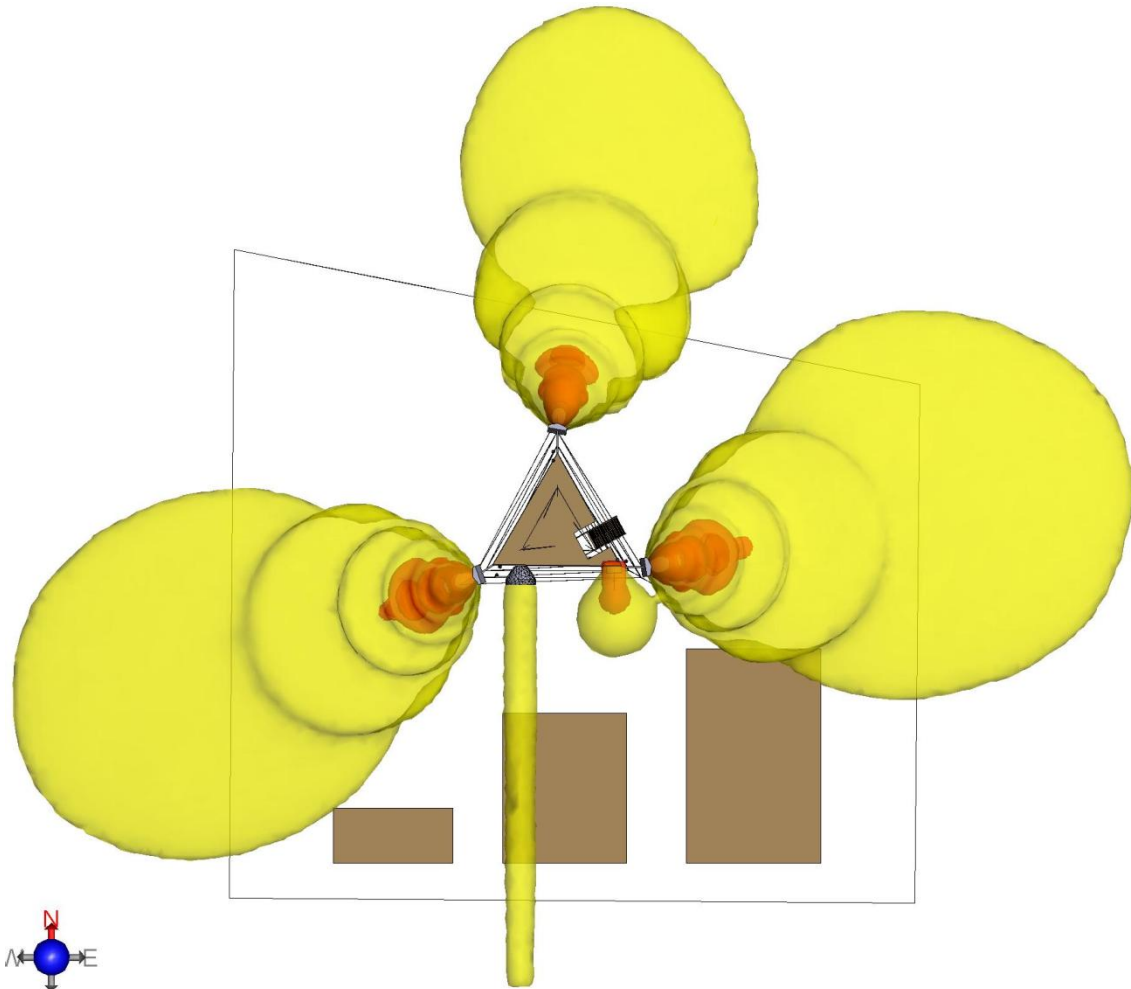
- Public
- Occupational

### View of platform 2



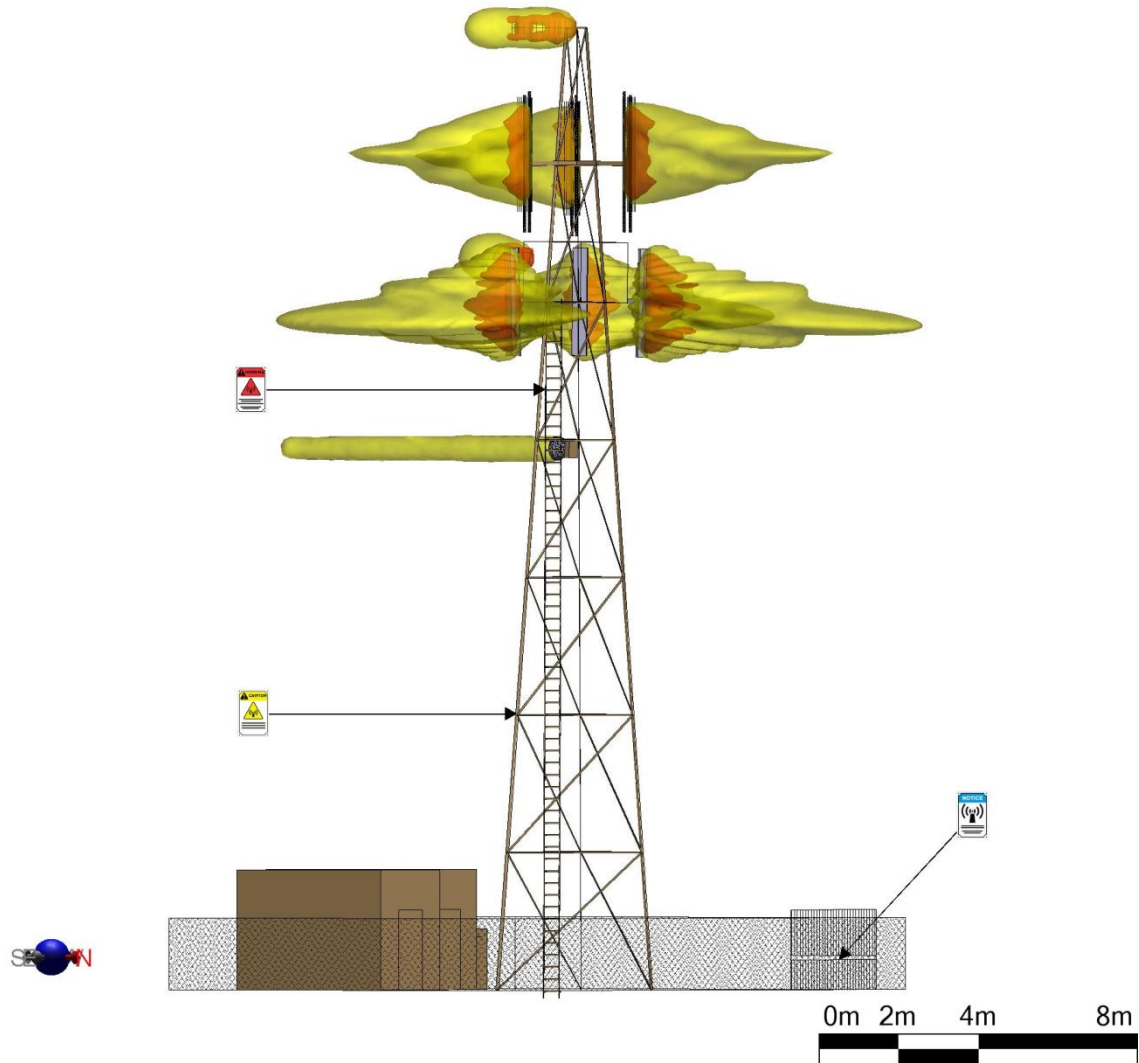
- Public
- Occupational

# Exclusion below 19m



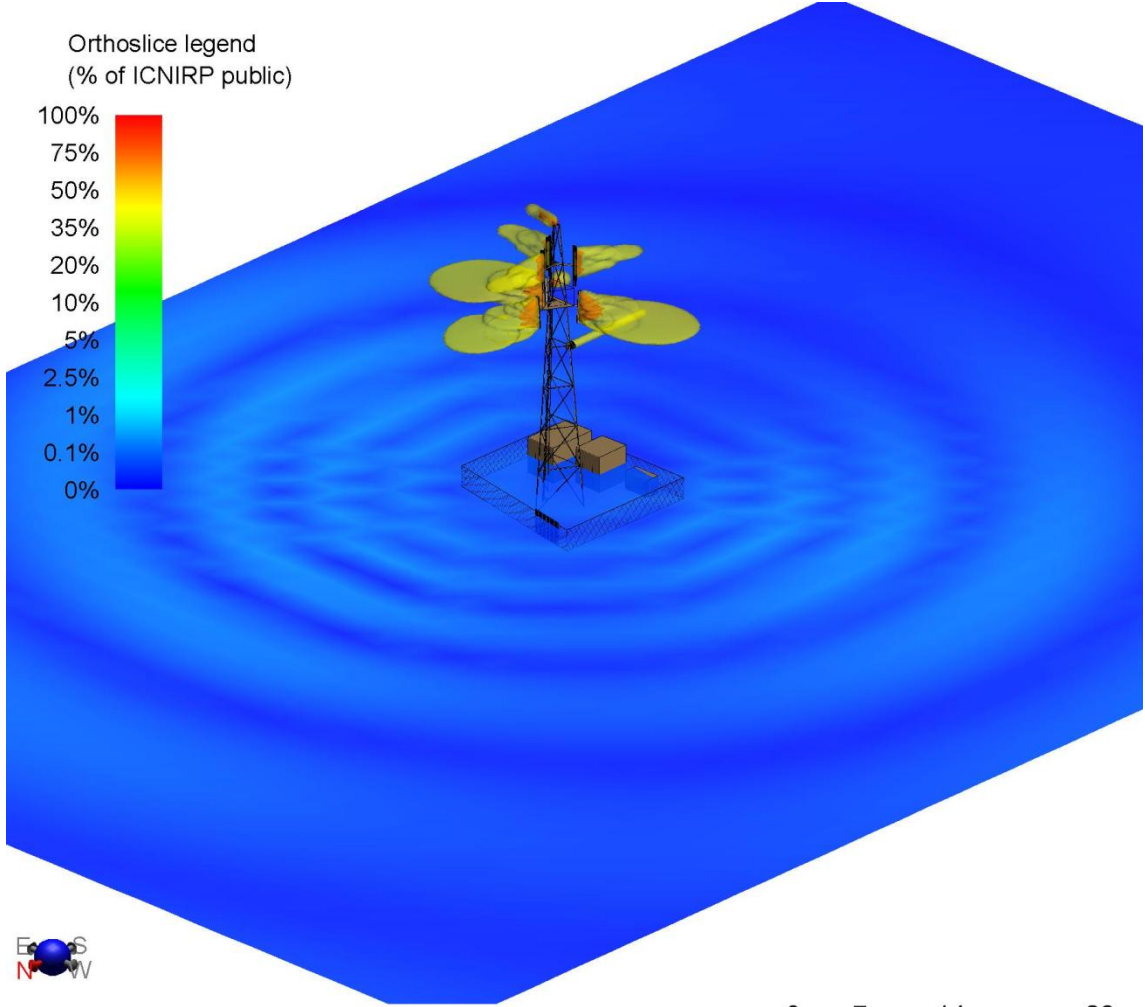
- Public
- Occupational

# Signage



- Public
- Occupational

# Environmental orthoslice



- Public
- Occupational

## Signage and Access Control

This section details the access control procedures in place at the site and the RF hazard warning signs.

### **Check that your EMF access control & RF signs are up to date.**

The RF EMF access control and RF signage information about this site is maintained on a centralised database that is kept up to date for all carriers and known services transmitting from this site.

Ensure that your EMF signage and access information is up to date by contacting the RF ASSESSOR for this site.

### **Access Control at Site**

Access to the base station is controlled with a fence and a locked gate.

### **RF Signage Installed**

A Notice sign is located on the gate of the base station and a Caution sign is located on the ladder leading up to the platform on the mast. A Warning sign is located just below the platform.

### **Special Access Requirements**

Contact Regional head office to arrange access to the base station.

## Equipment Installed at this base station

REPORT Ref	Owner	Type/Make/ Model	Azimuth	Mech. Tilt	Elec. Tilt	System/ Function/ Sector	Power (W)
Antenna1	Linked	Panel/Argus/ CNNPX310D	10	2	2	WCDMA850	40+40
Antenna2	Linked	Panel/Argus/ CNNPX310D	80	2	1	WCDMA850	40+40
					2	WCDMA2100	20+20
Antenna3	Linked	Panel/Argus/ CNNPX310D	250	2	1	WCDMA850	40+40
					1	WCDMA2100	20+20
Antenna4	Not specified	Custom/RFS/ YU11	100	0	0	400MHz	10
Antenna5	Not specified	Custom/Celwave/ PD1132R	0	0	0	806MHz	40
Antenna6	Not specified	Custom/Celwave/ PD1132R	200	0	0	806MHz	40
Antenna7	Not specified	Custom/Celwave/ PD1132R	100	0	0	806MHz	40
Antenna8	Not specified	Custom/RFS/YU6	180	0	0	400MHz	10
Antenna9	Not specified	Custom/Andrew/ VHLP2-180A	180	0	0	19.7GHz	1

### Antenna Comments

---